

CERTIFICATE OF LOCATION OF GOVERNMENT CORNER

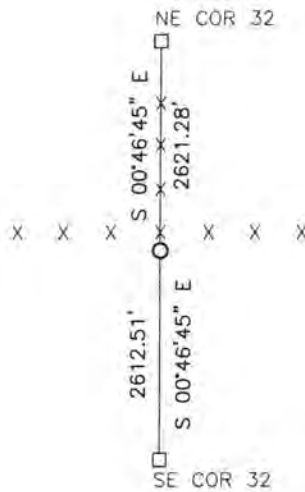
EAST QUARTER Corner of Section 32, Township 106, Range 43, 5TH P.M.

STATE OF MINNESOTA, County of MURRAY

At the corner location shown on the sketch:

- On _____ found a _____
- left monument as found, lowered monument, removed monument (explain)
- On 6/26/15 placed a 5/8" iron with seal #43844

SKETCH OF REFERENCE TIES



Minnesota State Plane Coordinate
 System Murray County Datum
 NAD83 (1996)
 N: 134609.862
 E: 432284.798

Statement of evidence relative to this corner location is on back of page.

I hereby certify that this document and the data contained herein was prepared by me or under my direct supervision.

[Signature] 3/22/16
 SIGNATURE DATE

Registration No. 43844

- Land Surveyor, Professional Engineer
- County Surveyor, County Engineer

OFFICE OF THE COUNTY RECORDER

County of MURRAY

I hereby certify that this document was filed in the Co. Recorders office at 11:00 A. on the 18TH day of OCTOBER A.D. 2016

County Recorder [Signature]

By _____, Deputy

DOCUMENT NO. _____

Statement of Evidence

In 1866, J.W. Bishop did the original subdivision of the township.

On June 26, 2015, Bueltel-Moseng Land Surveying set a 5/8" iron with seal #43844 on the south side of the corner fence post.